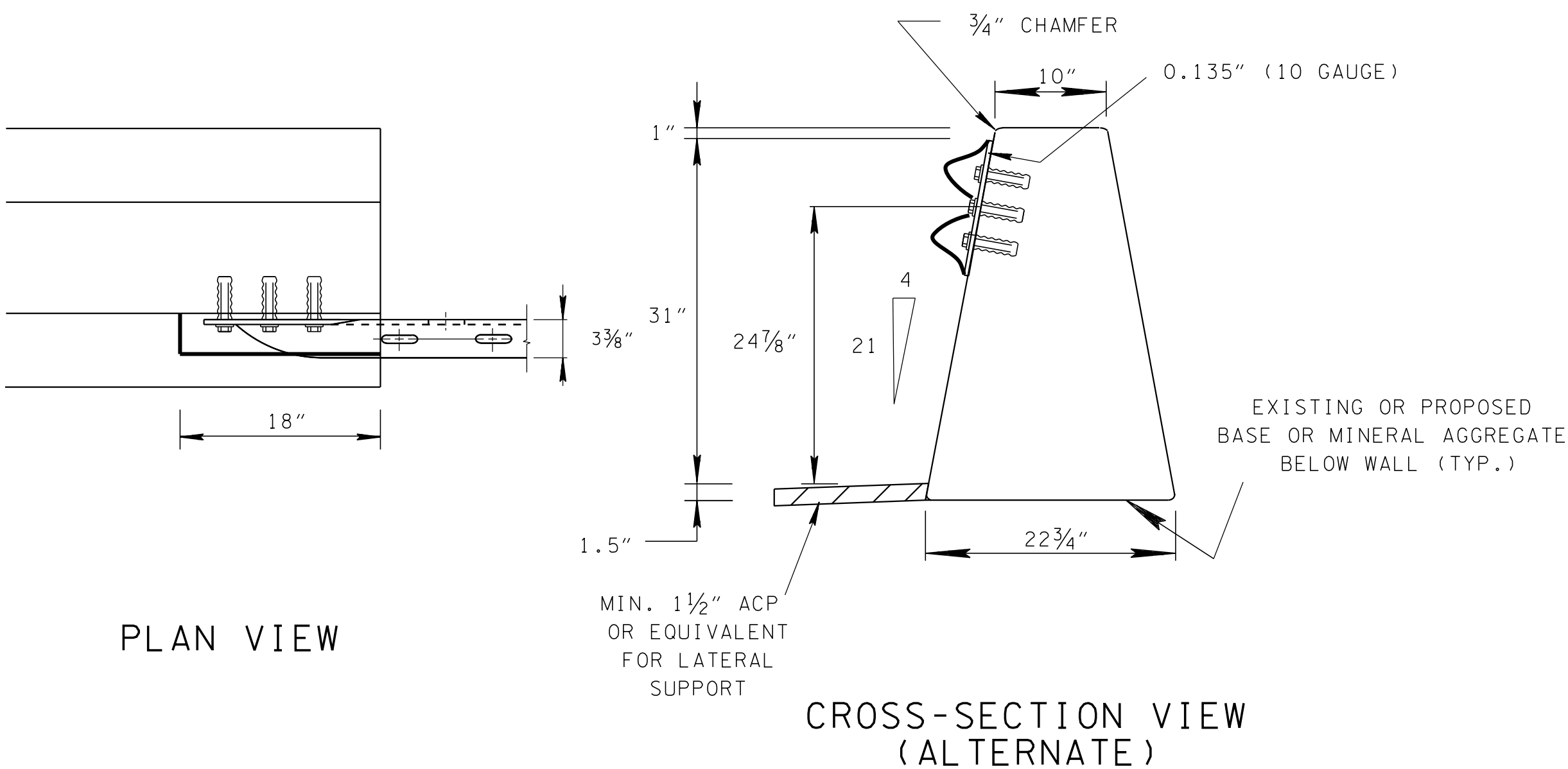
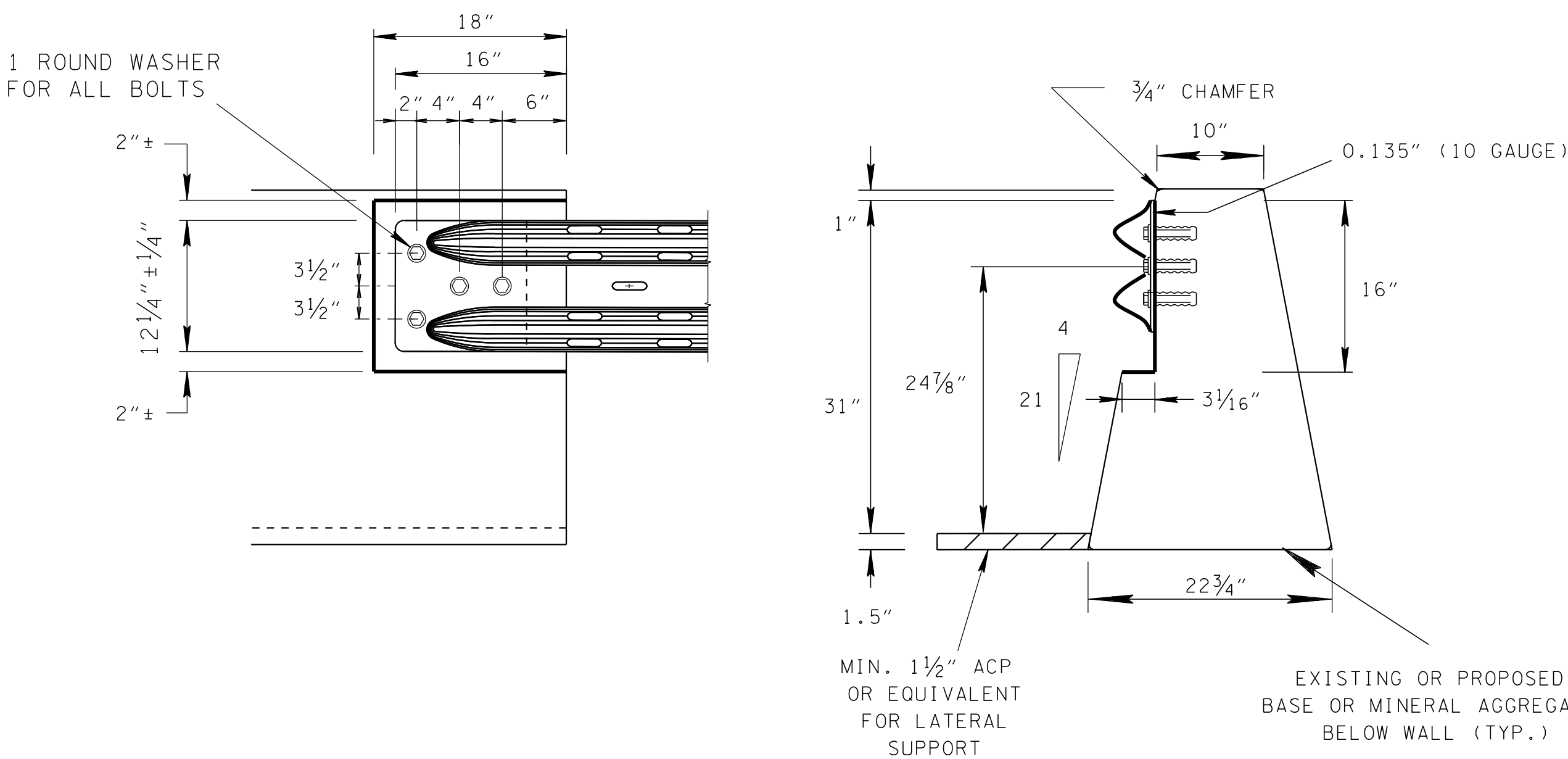


32" SINGLE SLOPE CONCRETE BARRIER WALL



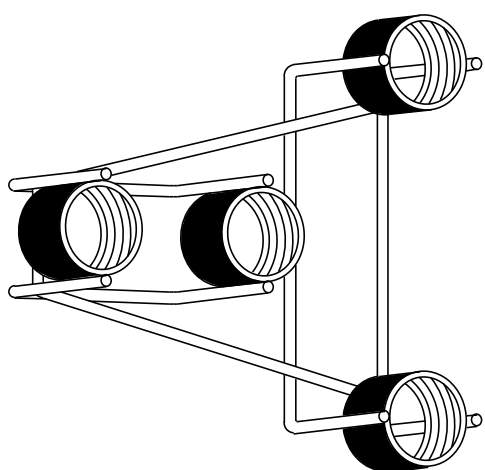
PLAN VIEW

CROSS-SECTION VIEW (ALTERNATE)



ELEVATION VIEW

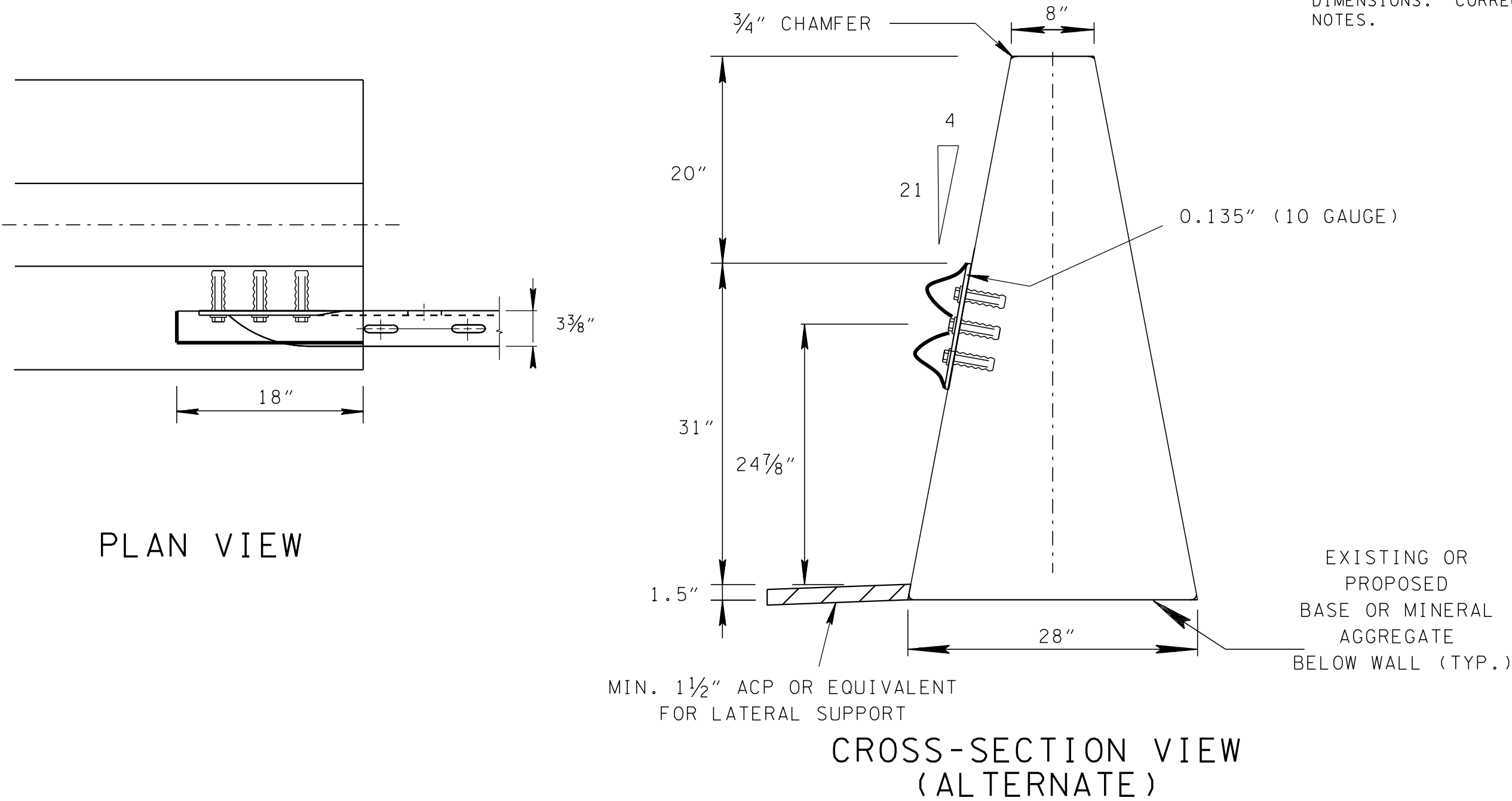
CROSS-SECTION VIEW



ANCHOR BLOCK INSERT ASSEMBLY

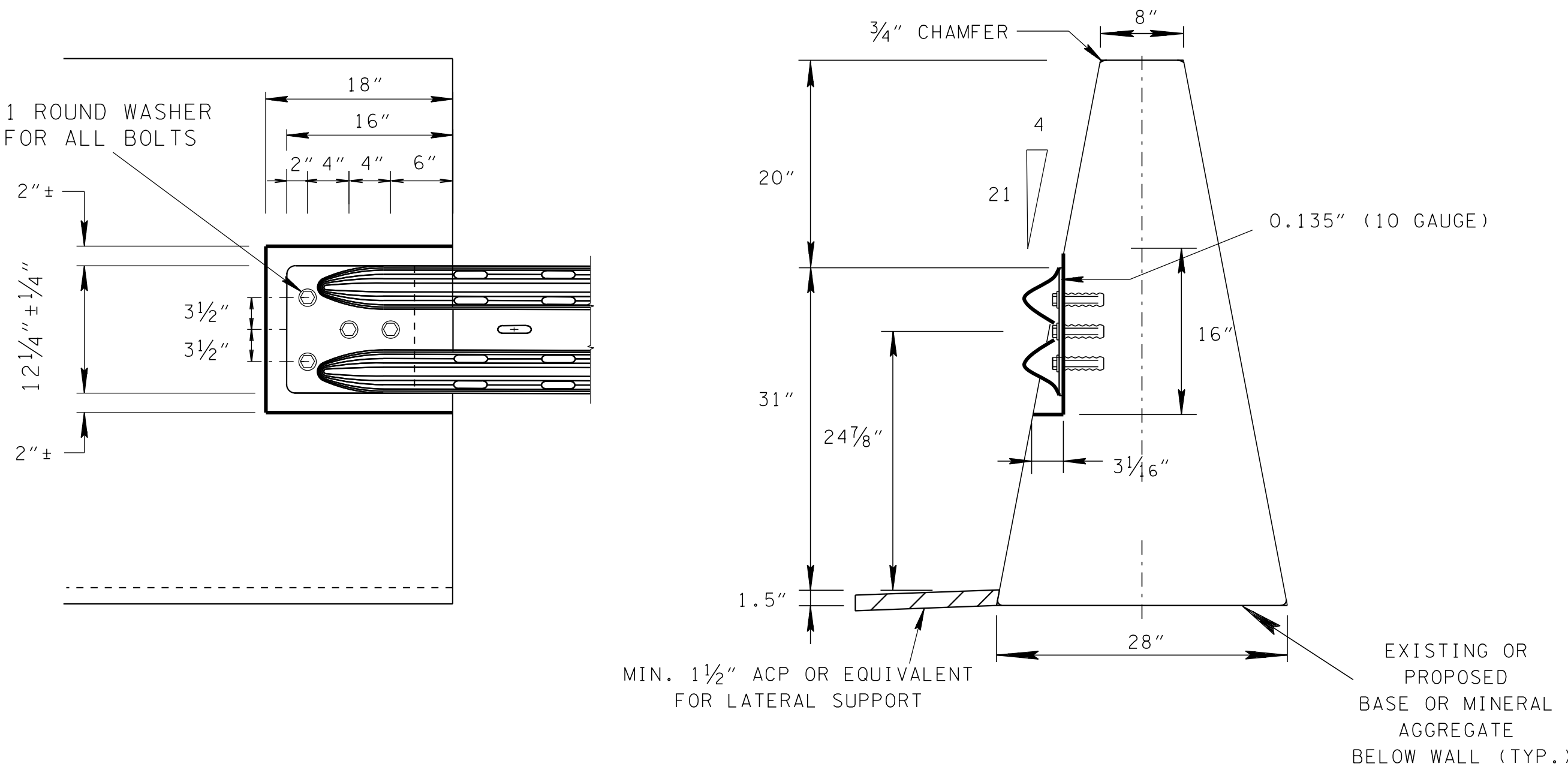
CAST IN PLACE THREADED STEEL INSERT WITH  
7/8" DIA. X 2" HEX HEAD GALVANIZED BOLTS (ASTM A307)  
HOT DIP ZINC COATING (ASTM A153)

51" SINGLE SLOPE CONCRETE BARRIER WALL



PLAN VIEW

CROSS-SECTION VIEW (ALTERNATE)



ELEVATION VIEW

CROSS-SECTION VIEW

GENERAL NOTES

- ANCHOR INSERT BOLTS SHALL BE 7/8" HEX HEAD INSTALLED IN 7/8" MASONRY ANCHOR. THE INSERTS ARE TO BE THREADED A MINIMUM OF 1 3/4". THE CONTRACTOR SHALL FURNISH ANCHOR PULL-OUT DATA FROM AN INDEPENDENT TESTING LABORATORY USING CLASS "A" CONCRETE IN ACCORDANCE WITH STATE OF TENNESSEE "STANDARD SPECIFICATIONS FOR ROAD AND BRIDGE CONSTRUCTION" THE ULTIMATE LOAD FOR 7/8" ANCHOR SHALL BE 19,000 POUNDS. BOLTS SHALL CONFORM TO ASTM A307.
- THE MASONRY ANCHORS SHALL BE SUB-SET IN THE CONCRETE AT A DEPTH OF BETWEEN 3/32" TO 1/4" AND TORQUED WITH THE END TERMINAL IN THE PLACE TO AN EQUIVALENT DIRECT PULL-OUT LOAD OF 12,000 POUNDS. SLIPPAGE SHALL NOT EXCEED 1/4".
- THE CONTRACTOR WILL PERFORM ON-SITE TESTING OF EACH BOLT IN THE PRESENCE OF TDOT PERSONNEL TO ENSURE THESE REQUIREMENTS ARE MET. ANY INSTALLATION NOT MEETING WILL BE REJECTED.
- BOLTS AND WASHERS TO BE GALVANIZED CONFORMING TO REQUIREMENTS OF ASTM A153.
- SEE S-SSMB-1 AND S-SSMB-2 FOR ADDITIONAL DETAILS.

MINOR REVISION -- FHWA  
APPROVAL NOT REQUIRED.

STATE OF TENNESSEE  
DEPARTMENT OF TRANSPORTATION

GUARDRAIL  
ATTACHMENT TO  
SINGLE SLOPE  
CONCRETE  
BARRIER WALL

8-30-10

S-SSMB-6